



UP TO
5X
LIFE
EXTENSION

ETHYLENE
FILTRATION SYSTEMS

KIF Filter Tubes

REMOVES ETHYLENE

INCREASES LIFE OF FRUITS, FLOWERS
AND VEGETABLES

PREVENTS MOULDS FUNGUS

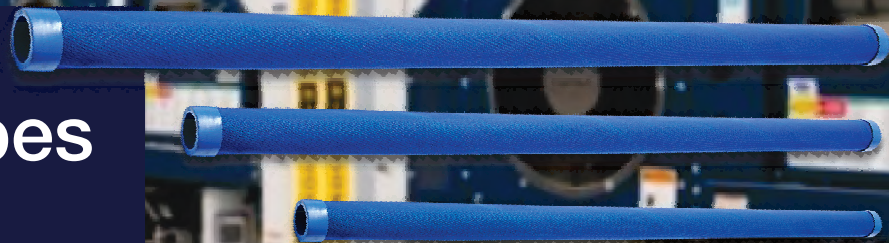
COVERS 40 CBM FOR 1 MONTH TRANSIT

EASY TO USE AND DISPOSE

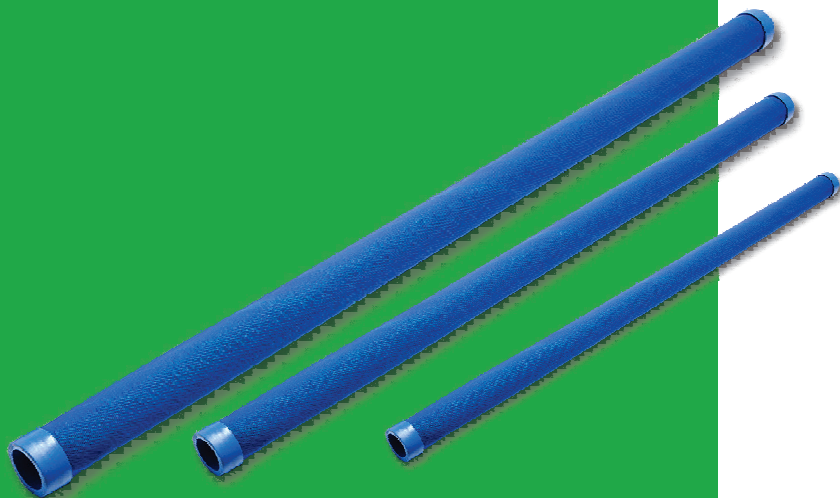
DECREASES ODOUR

LOWERS CROSS CONTAMINATION

MADE FROM NATURAL MATERIALS,
COATED WITH ACTIVE FORMULA



KIF FILTERS



PRODUCT

KIF Tubes are used primarily in reefer containers and cold storages to absorb the ethylene gas inside the container. The long haulage and transportation can cause excessive accumulation of ethylene gas inside the container causing alarmingly high acceleration of ripening of ripening of fruits and vegetables causing early decay of the produce.

The ethylene production from fruits and vegetable can hamper the freshness at the time the produce reaches the destination.

Keep It fresh Tubes can be easily placed in cold storages, walking coolers, reefer vans and non reefer vans of fresh fruits, vegetables and flowers. The KIF Tubes work in a multiple ways to protect and extend shelf life of fresh produce. Keep it fresh Tubes contain ethylene absorbers packed with non-woven cloth which acts as breathable membrane.

The absorption of the gas reduces the ripening speed and hence increasing the shelf life of fresh produce.

HOW IT WORKS

KIF Tubes consists of special composition mixture of zeolite powder and potassium permanganate and other proprietary additives in a certain composition that causes ethylene & moisture absorption by simultaneously causing volatile bacterial inhibition (VBI).

PREVENTS



ANTI-BACETERIAL



ANTI-FUNGAL



PREVENTS DECAY

**MADE FROM NATURAL MATERIALS,
COATED WITH ACTIVE FORMULA**



KIF FILTERS



USAGE

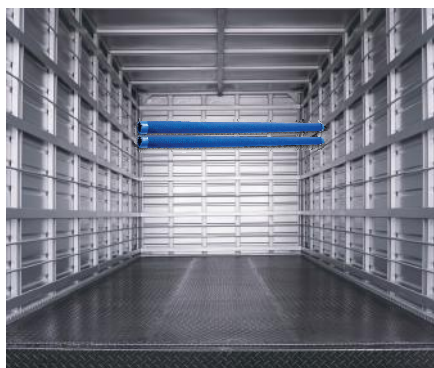
- Reefer Vans
- Non Reefer Vans
- Cold Storages
- Sea Containers
- Walking Coolers
- Retail Coolers
- Retail Transport and Shelves

HOW TO APPLY

Place the Tube in front of the suction area of ventilation system of a cold room.

KIF Tube Causes negligible pressure drop as the air passes through the filter and reduces ethylene content. 1no. to 3nos. tubes are recommended per COLD STORAGE & REEFER depending on Voyage Time, Type of Fruit etc.

Easy To Install



Two pre designed slots to inset cable ties on each side

Two breathe-able recyclable plastic mesh membranes for each air pass through



Compliant



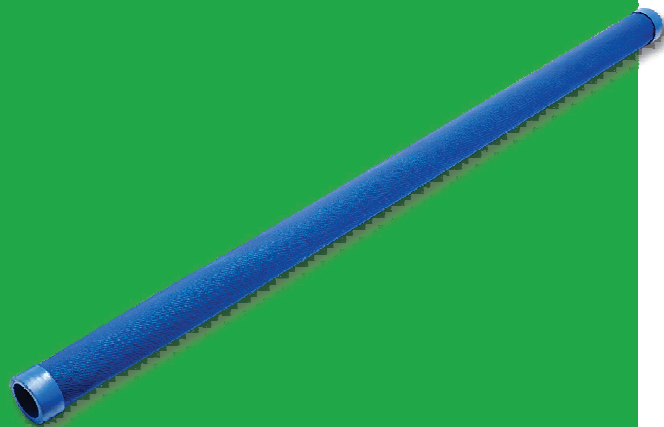
Recyclable



Made from
natural materials

**TO BE PLACED NEAR
INTAKE AIR FLOW**

KIF FILTERS



TECHNICAL DATA

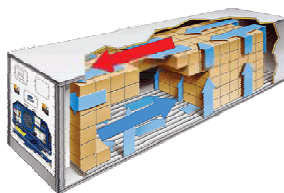
SPECS	KIF FILTER 100	KIF FILTER 75	KIF FILTER 50
DIMENSIONS	50 mm x 1000 mm	50 mm x 750 mm	50 mm x 500 mm
WEIGHT	1.1 Kg	0.8 Kg	0.6 Kg
ETHYLENE CONVERSION CAPACITY	4 ltr	3 ltr	2 ltr
RECYCLABLE	100%	100%	100%

See Technical Datasheet and Safety Datasheet for more information



**MADE FROM NATURAL MATERIALS,
COATED WITH ACTIVE FORMULA**

DOSAGE LEVELS



Option 1

2 Filter Tubes
KIF Tube 100

1 Reefer Container
40 HC or Reefer Truck

20-30 days
Sail Time

Option 2

2 Filter Tubes
KIF Tube 75

1 Reefer Container
40 HC or Reefer Truck

10-15 days
Road transit or Sail Time

Option 3

2 Filter Tubes
KIF Tube 50

1 Reefer Container
40 HC or Reefer Truck

5-7 days
Road transit or Sail Time